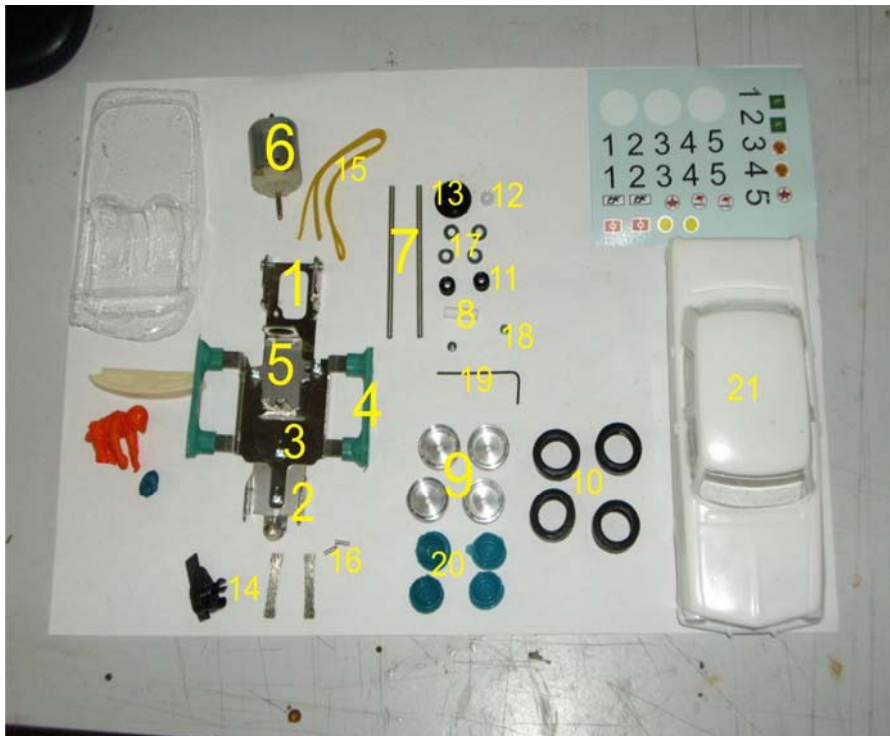




Assembly instructions for 1/32 kit.

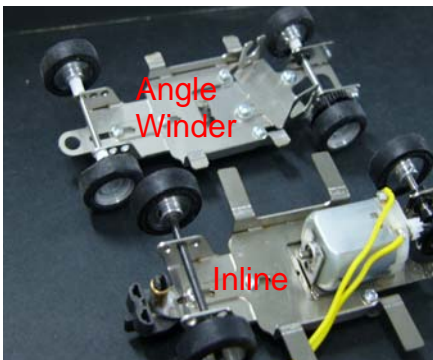


Contents of kit

1. Rear chassis.
2. Front of chassis.
3. Body mount. (s/steel)
4. Body mounts (plastic)
5. Motor mount.
6. Motor
7. Axles (2 off)
8. Axle spacer
9. Rims (4 off)
10. Tyres (4 off)
11. Rear axle bearing (2 off)
12. Pinion gear
13. Spur gear
14. Flag
15. Lead wire
16. Lead wire eyelets
17. Washes (4 off)
18. Screws (6 off)
19. Allen Key
20. Wheel inserts (4 off)
21. Body

Some prior experience in slot car assembly is required for this kit. If you are unsure then ask your MJK supplier or email us at [MJK Engineering](http://www.mjk-engineering.com) for assistance. Remember double check everything before cutting, grinding or gluing.

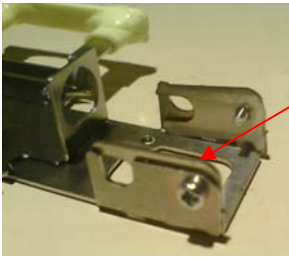
Chassis Assembly



- Kits come with the chassis assembled and only needs to be checked and adjusted to suit the body. Use supplied body to set chassis up correctly, lining up the axle holes with the wheel arches and the body mount in the centre of the wheel arches.
- Motors can be mounted as inline and angle winder. The kit come stocked with inline gears standard. If you wish to mount the motor as an angle winder then contact your local supplier to purchase these gears.
- If you pull apart the chassis then please note the order the chassis parts are mounted. It should be as follows. Item 1 is on the bottom, item 2 is in between item 1 and item 3 which is on the top.

- Before mounting motor remove motor mount and check that the motor (6) is a nice snug fit into the motor mount (5) you will need to use a file remove a little material from the motor end bell (this done on purpose to ensure that the motor is a good fit to mounting).
- When the fit is a good one rotate motor and then mount motor (6) into the motor mount (5) it should snap in place.
- Mount pinion gear (12) to armature.
- Remount the motor mount to the chassis.
- Mount the spur gear (13) to the rear axle.
- Add the two rear axle bearings (11) to axle.

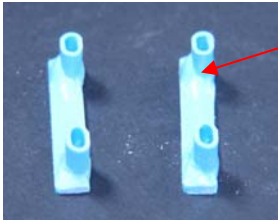




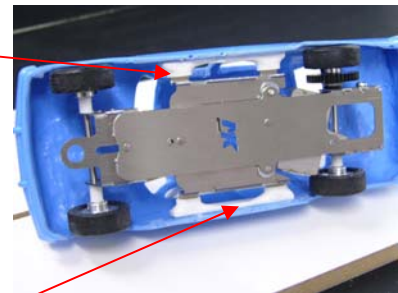
- Use a Phillips head screw driver to remove the two brackets at the rear of the rear chassis (1) and mount the rear axle with spur gear to the chassis using the two brackets to trap and hold the axle bearings (11) in place. These brackets may need to be filed a little bit to ensure that the axles are in line and there is no binding. Do not tighten screws until you have checked that every thing is in align.
- Ensure that motor pinion gear (12) is aligned with the spur gear (13) and that there is a good mesh.
- Tighten screws and recheck mesh and alignment of gears.
- Add lead wires (15) to motor.
- Mount flag (14) to front of chassis.
- Trim lead wires to length as needed and add the lead wire eyelets (16) to end of wire and mount lead wires to flag.
- Add front axle to chassis to check that it fits ok.
- Cut axles to length after mounting body to ensure the correct length is achieved.

Body mounting steps

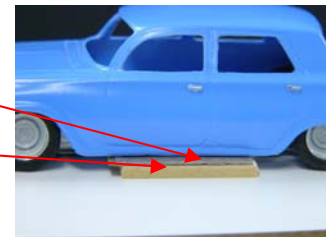
- Mount the plastic body (4) mounts to the s/steel body mounts (3) and compare to the underside of the body.
- Note that the plastic body mounts are off set and can be set up either way but both should be the same



- The s/steel body mount and the plastic body mounts need to be trimmed down to suit the width of the body.
- Sand the mating surfaces before gluing
- Chassis with plastic mounts should be a firm fit with no slop to the body.



- Set chassis onto a flat surface and place body over.
- Use spacers to set the body to the correct height.
- When you are happy with position and set up, glue the plastic body mounts to the inside of the body using 5 minute Araldite. Reset the body on the spacers while the glue is setting.
- After glue has set (best to wait over night). Remove some material from the plastic and s/steel mounts so the body can rock a little on its mounts. Seek advise if unsure what to do.(this aids handling)
- Mount the rims / tyres to axles. Cut spacers (8) supplied to align front rims to the width of the body. Careful not to have the rims or tyres rubbing on the inside of the body.



- Trim axles down to length so they do not protrude past the out side centre face of rim.
- Clean any excess materials from the wheel inserts (20) and glue them to the inside of the rims.
- Paint the body/wheel trims your favorite colour.
- We recommend that you wash the body with Prepsol before painting and use a spray on bumper primer before the final colour to get the best results.
- Mount the water slide decals. Add a couple of drops of detergent to water to aid positioning of decals.
- We recommend that you use TAMIYA clear paint to seal the decals.
- This should be applied in several fine misting coats before applying a final heavy coat.
- Trim the windows to suit the inside of the body (leave as one piece) and it should snap into place.
- Trim and paint interior to suit and hold in place with tape.

After car has had a shake down run and you are happy with everything it is recommended that you apply a small amount of araldite to the motor mounts and rear axle bearing mounts to lock them into place and remove any movement or slop. (Careful not to apply any on the running surfaces as this will tighten or lock up axles/motor.)

Now lets go Racing